

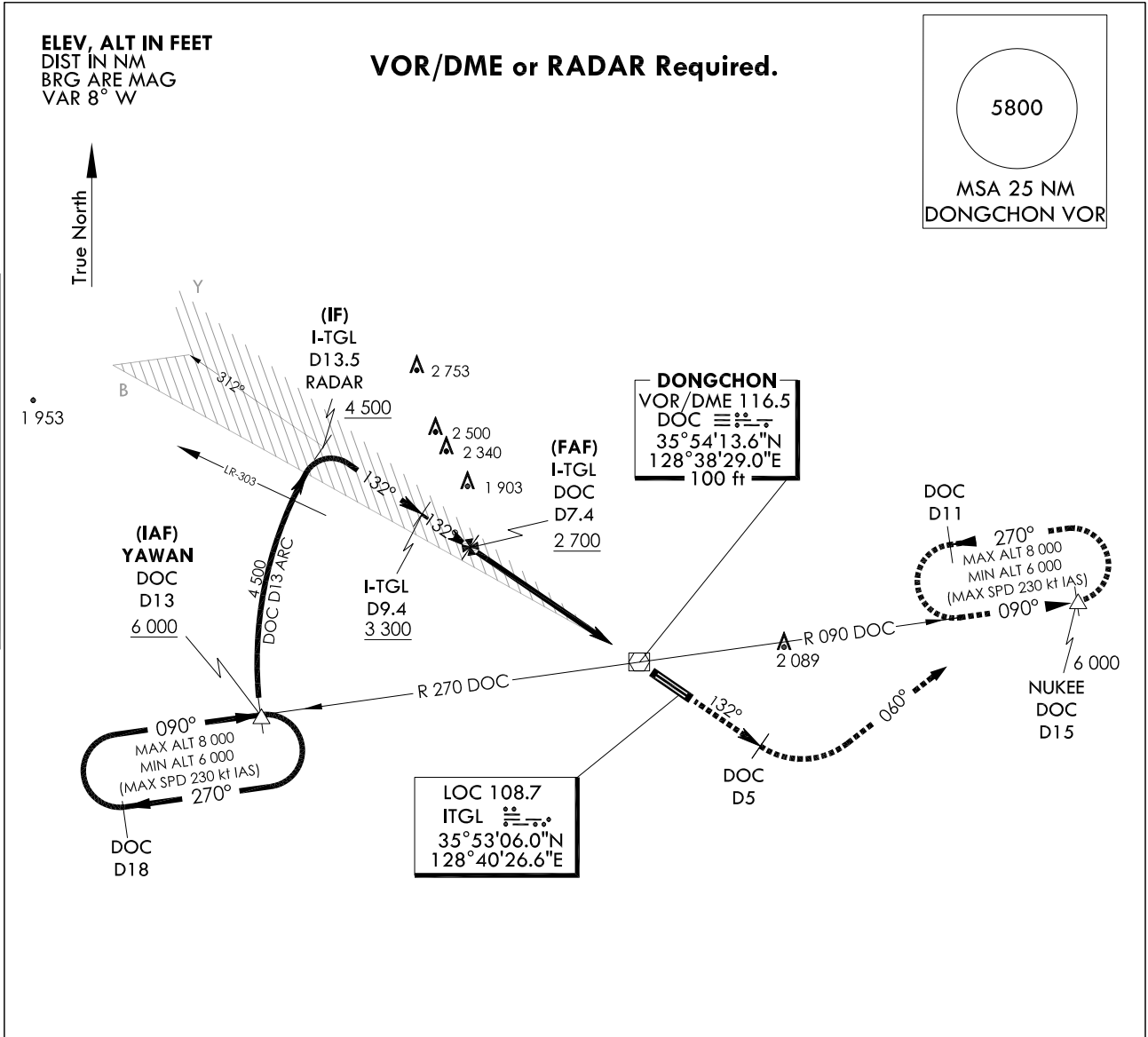
INSTRUMENT APPROACH CHART

AERODROME ELEV 120 ft
HEIGHTS RELATED TO
THR RWY 13R - ELEV 110 ft
HIGHEST ELEV TDZ 111 ft

DAEGU APP	135.9	346.3
DAEGU TWR	126.2	236.6
	365.0	

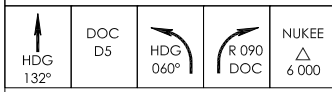
DAEGU/Daegu Intl(RKTN)
ILS
RWY 13R

Note : Approach and circle to land under U.S. TERPS.



1. Circling is not authorized.
2. Missed approach requires minimum climb of 390 ft per NM to 6 000 ft.

NOT TO SCALE

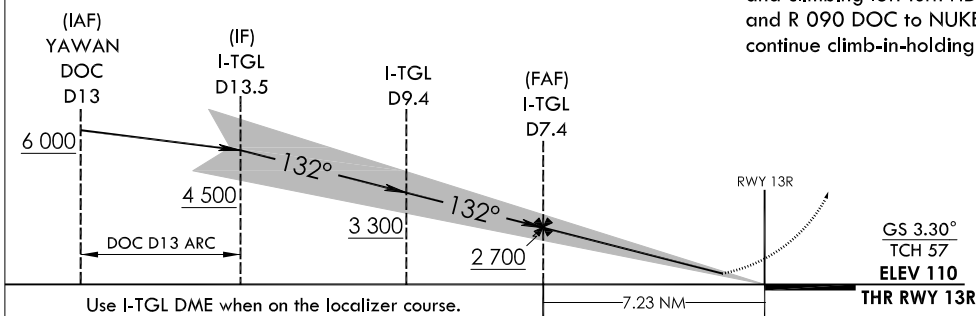


MISSED APPROACH CLIMB RATE TABLE

RWY	Knots	60	120	180	240	300	TO
13R	V/V(fpm)	390	780	1 170	1 560	1 950	6 000

MISSED APPROACH

Climb to 6 000 ft via HDG 132° to DOC 5 DME and climbing left turn HDG 060° to intercept R 090 DOC and R 090 DOC to NUKKEE and hold, continue climb-in-holding to 6 000 ft.



CATEGORY		A	B	C	D	E
S-ILS 13R	FULL		657 - 1 1/2	546(600 - 1 1/2)		
	ALS inop		657 - 1 5/8	546(600 - 1 5/8)		

Change : Amended ILS plan view symbol.

INTENTIONALLY

LEFT

BLANK

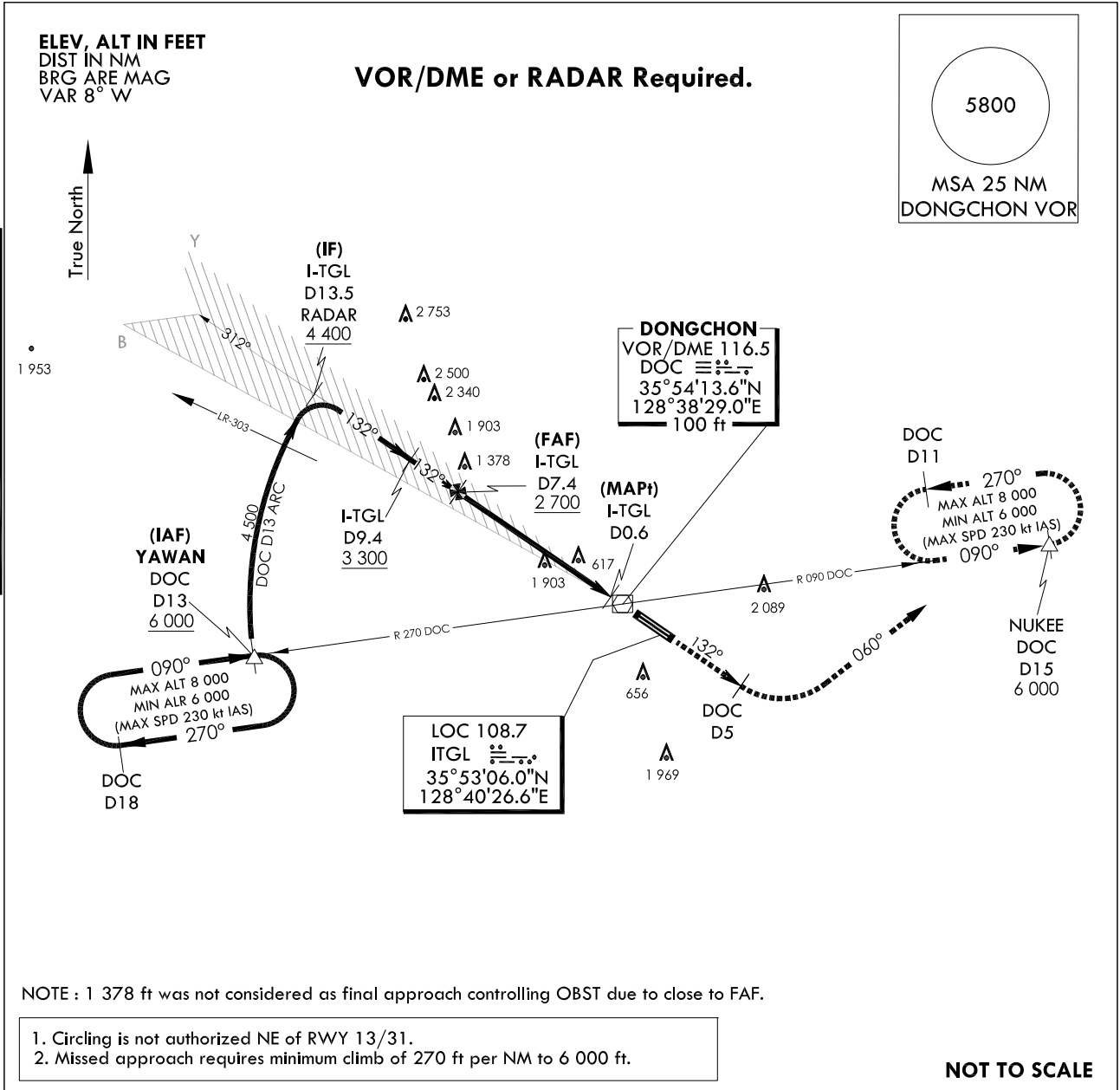
INSTRUMENT APPROACH CHART

AERODROME ELEV 120 ft
HEIGHTS RELATED TO
THR RWY 13R - ELEV 110 ft
HIGHEST ELEV TDZ 111 ft

DAEGU APP 135.9 346.3
DAEGU TWR 126.2 236.6
365.0

DAEGU/Daegu Intl(RKTN)
LOC/DME
RWY 13R

Note : Approach and circle to land under U.S. TERPS.



NOTE : 1 378 ft was not considered as final approach controlling OBST due to close to FAF.

1. Circling is not authorized NE of RWY 13/31.
2. Missed approach requires minimum climb of 270 ft per NM to 6 000 ft.

NOT TO SCALE

Hdg 132°	DOC D5	Hdg 060°	R 090 DOC	NUKEE △ 6 000
-------------	-----------	-------------	--------------	---------------------

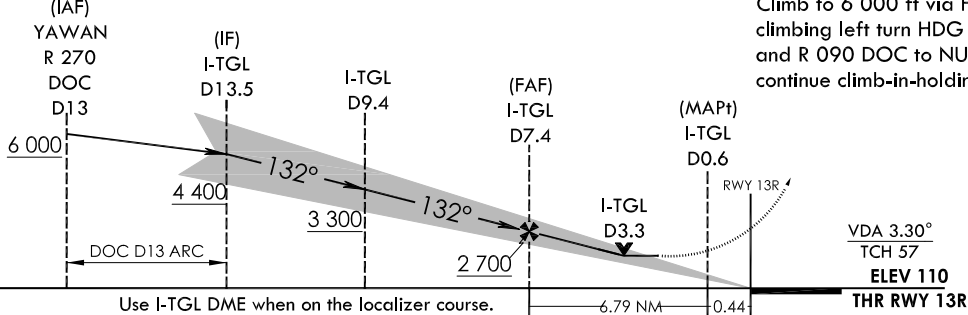
MISSED APPROACH CLIMB RATE TABLE

RWY	Knots	60	120	180	240	300	TO
13R	V/V(fpm)	270	530	790	1 050	1 310	6 000

TRANSITION ALT 14 000
TRANSITION LVL FL 140

MISSED APPROACH

Climb to 6 000 ft via HDG 132° to DOC 5 DME and climbing left turn HDG 060° to intercept R 090 DOC and R 090 DOC to NUKKEE and hold, continue climb-in-holding to 6 000 ft.



CATEGORY	A		B		C		D		E		
	Full	ALS inop	Full	ALS inop	Full	ALS inop	Full	ALS inop	Full	ALS inop	
S-LOC 13R	1 260/55 1 149(1 200-1)		1 260/60 1 149(1 200-1 1/4)		1 260 - 3		1 149(1 200 - 3)		1 260 - 3		1 149(1 200 - 3)
CIRCLING	1 260 - 1 1/4 1 140(1 200 - 1 1/4)		1 260 - 1 1/2 1 140(1 200 - 1 1/2)		1 260 - 3 1 140(1 200 - 3)		1 300 - 3 1 180(1 200 - 3)		2 340 - 3 2 220(2 300 - 3)		

Change : Amended ILS plan view symbol.

INTENTIONALLY

LEFT

BLANK

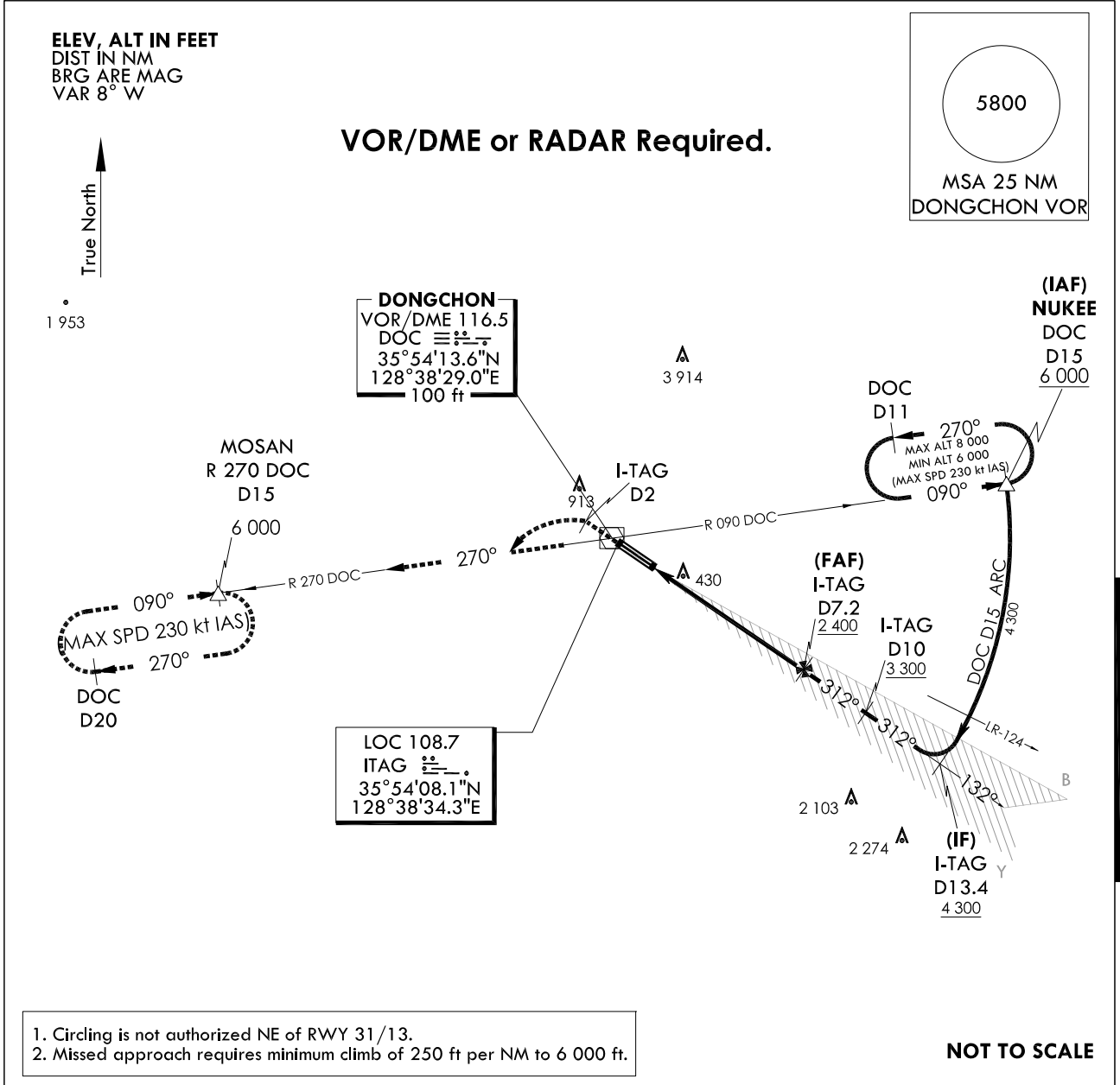
**INSTRUMENT
APPROACH
CHART**

AERODROME ELEV 120 ft
HEIGHTS RELATED TO
THR RWY 31L - ELEV 118 ft
HIGHEST ELEV TDZ 118 ft

DAEGU APP	135.9	346.3
DAEGU TWR	126.2	236.6
	365.0	

DAEGU/Daegu Intl(RKTN)
ILS
RWY 31L

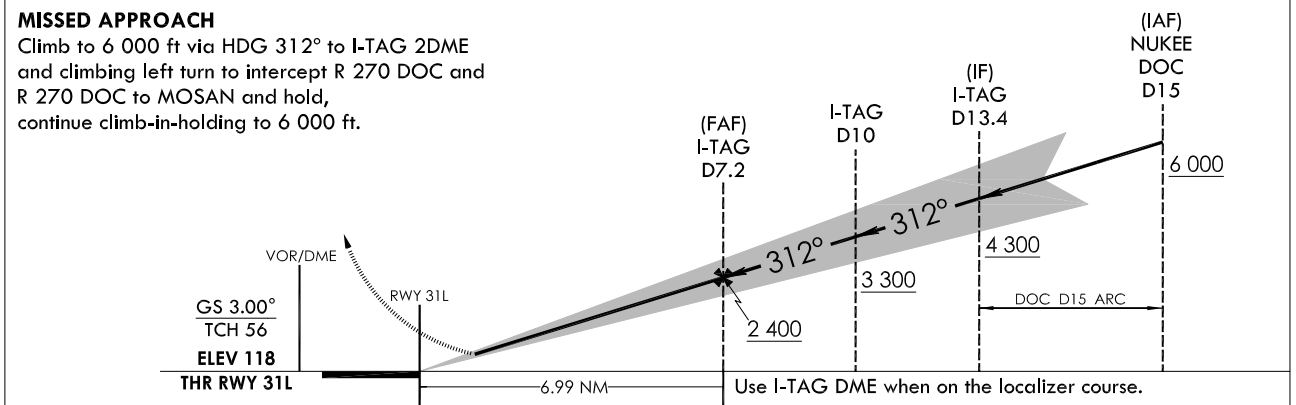
Note : Approach and circle to land under U.S. TERPS.



1. Circling is not authorized NE of RWY 31/13.
2. Missed approach requires minimum climb of 250 ft per NM to 6 000 ft.

NOT TO SCALE

HDG 312°	I-TAG D2	R 270 DOC	MOSAN 6 000	TRANSITION ALT 14 000	MISSED APPROACH CLIMB RATE TABLE							
				TRANSITION LVL FL 140	RWY	Knots	60	120	180	240	300	TO
					31L	V/V(fpm)	250	500	750	1 000	1 250	6 000



CATEGORY		A	B	C	D
S-ILS 31L	FULL		318 / 24	200(200 - 1/2)	
	ALS inop		318 / 40	200(200 - 3/4)	

Change : Amended ILS plan view symbol.

INTENTIONALLY

LEFT

BLANK

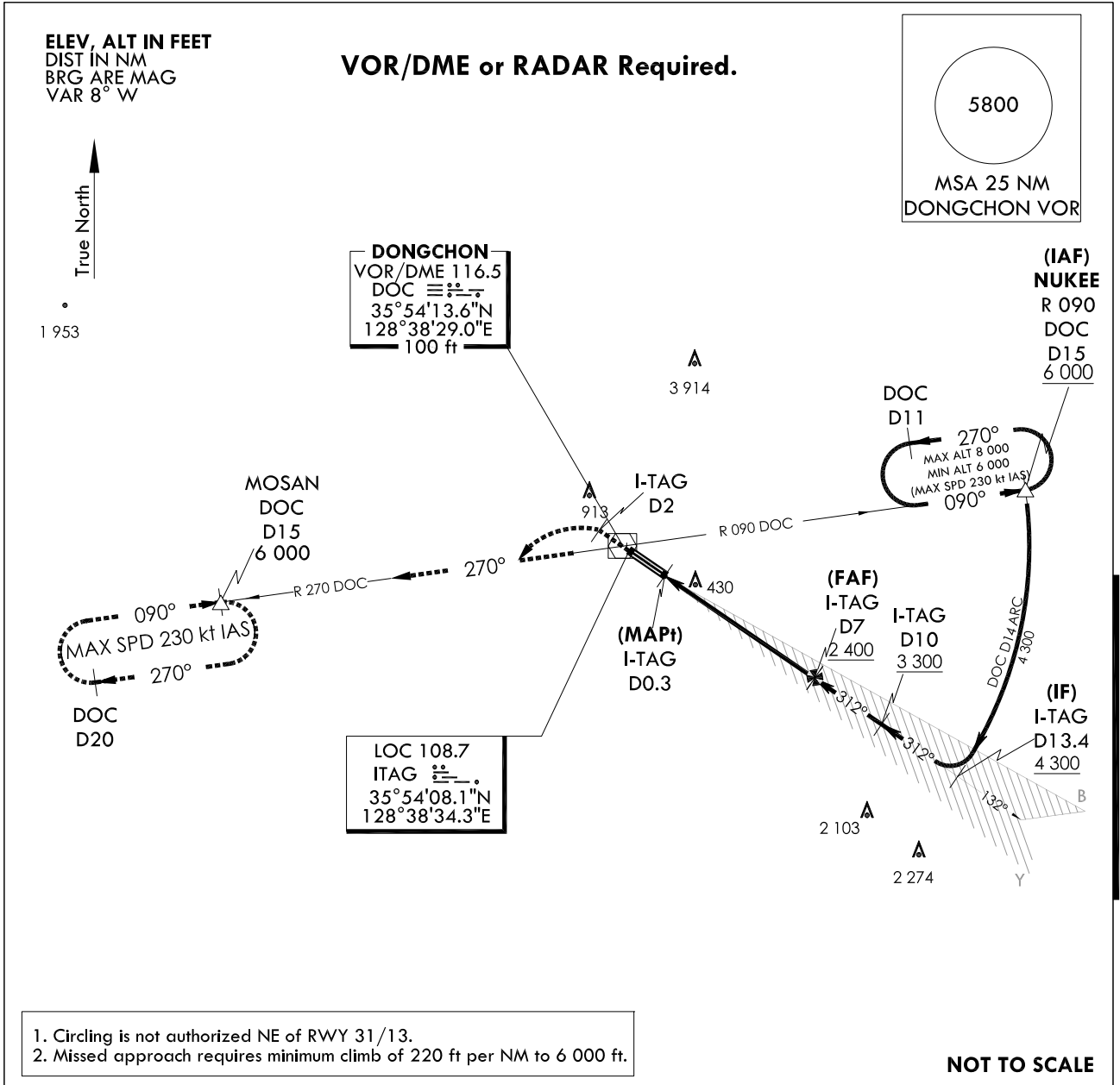
INSTRUMENT APPROACH CHART

AERODROME ELEV 120 ft
HEIGHTS RELATED TO
THR RWY 31L - ELEV 118 ft
HIGHEST ELEV TDZ 118 ft

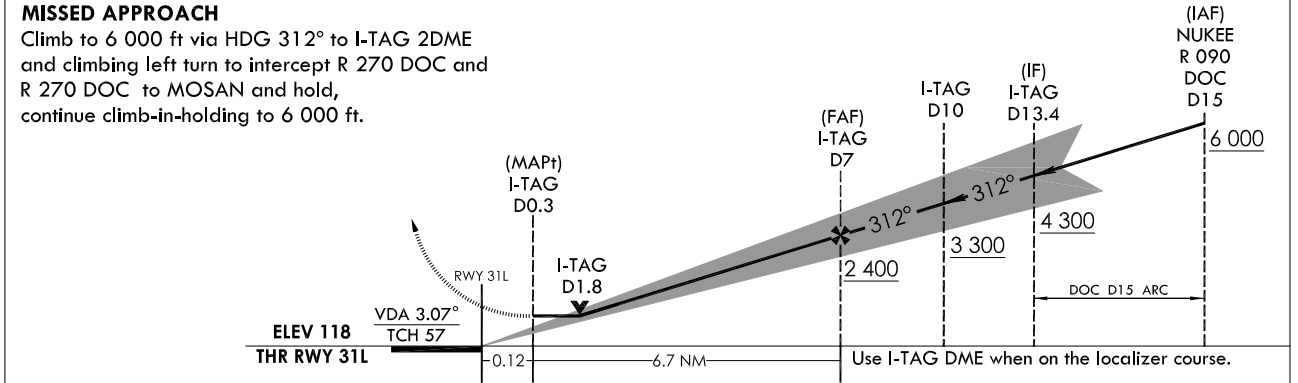
DAEGU APP	135.9	346.3
DAEGU TWR	126.2	236.6
	365.0	

DAEGU/Daegu Intl(RKTN)
LOC/DME RWY 31L

Note : Approach and circle to land under U.S. TERPS.



RWY	Knots	60	120	180	240	300	TO
31L	V/V(fpm)	220	430	640	850	1 060	6 000



CATEGORY	S-LOC 31L	A		B		C		D	
		FULL	ALS inop	FULL	ALS inop	FULL	ALS inop	FULL	ALS inop
CIRCLING		760 - 1	640(700 - 1)	960 - 1 1/4	840(900 - 1 1/4)	980 - 2 1/2	860(900 - 2 1/2)	1 300-3	1 180(1 200-3)

INTENTIONALLY

LEFT

BLANK

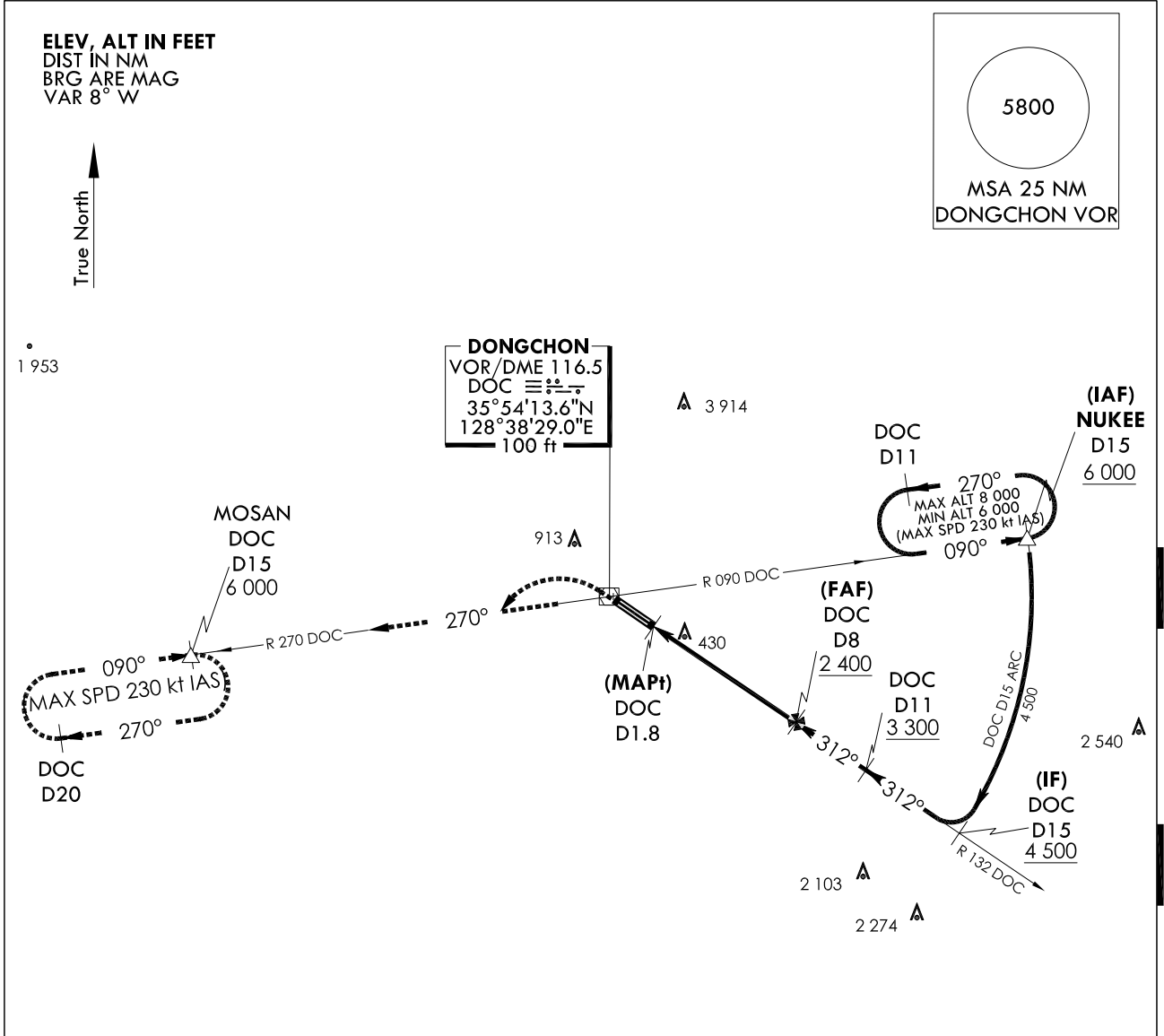
**INSTRUMENT
APPROACH
CHART**

AERODROME ELEV 120 ft
HEIGHTS RELATED TO
THR RWY 31L - ELEV 118 ft
HIGHEST ELEV TDZ 118 ft

DAEGU APP 135.9 346.3
DAEGU TWR 126.2 236.6
365.0

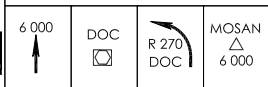
**DAEGU/Daegu Intl(RKTN)
VOR/DME
RWY 31L**

Note : Approach and circle to land under U.S. TERPS.



1. Circling is not authorized NE of RWY 31/13.
2. Missed approach requires minimum climb of 250 ft per NM to 6 000 ft.

NOT TO SCALE



TRANSITION ALT	14 000
TRANSITION LVL	FL 140

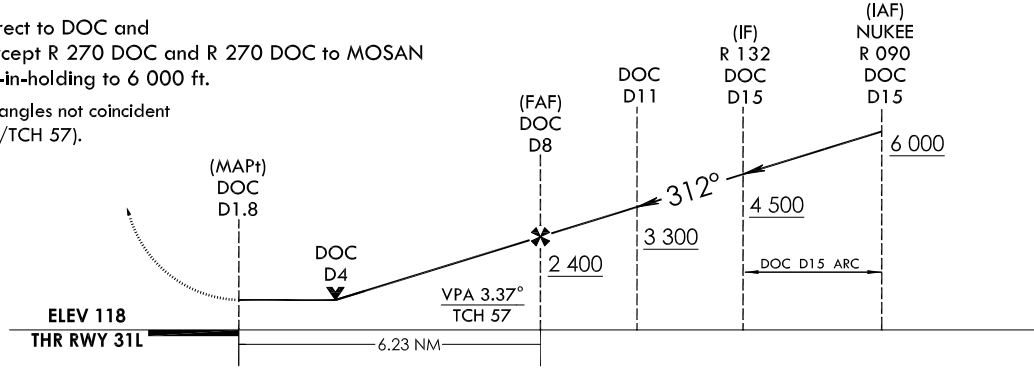
MISSED APPROACH CLIMB RATE TABLE

RWY	Knots	60	120	180	240	300	TO
31L	V/V(fpm)	250	470	700	930	1 160	6 000

MISSED APPROACH

Climb to 6 000 ft via direct to DOC and climbing left turn to intercept R 270 DOC and R 270 DOC to MOSAN and hold, continue climb-in-holding to 6 000 ft.

NOTE : VGSI and descent angles not coincident
(VGSI Angle 3.00°/TCH 57).



CATEGORY		A	B	C	D
S-VOR 31L	FULL	880/40	762(800 - 3/4)	880-1 3/4	762(800-1 3/4)
	ALS inop	880/55	762(800 - 1)	880-2 1/2	762(800-2 1/2)
CIRCLING		880 - 1 760(800 - 1)	960 - 1 1/4 840(900 - 1 1/4)	980 - 2 1/2 860(900 - 2 1/2)	1 300-3 1 180(1 200-3)

Change : Amended radial format.

INTENTIONALLY

LEFT

BLANK

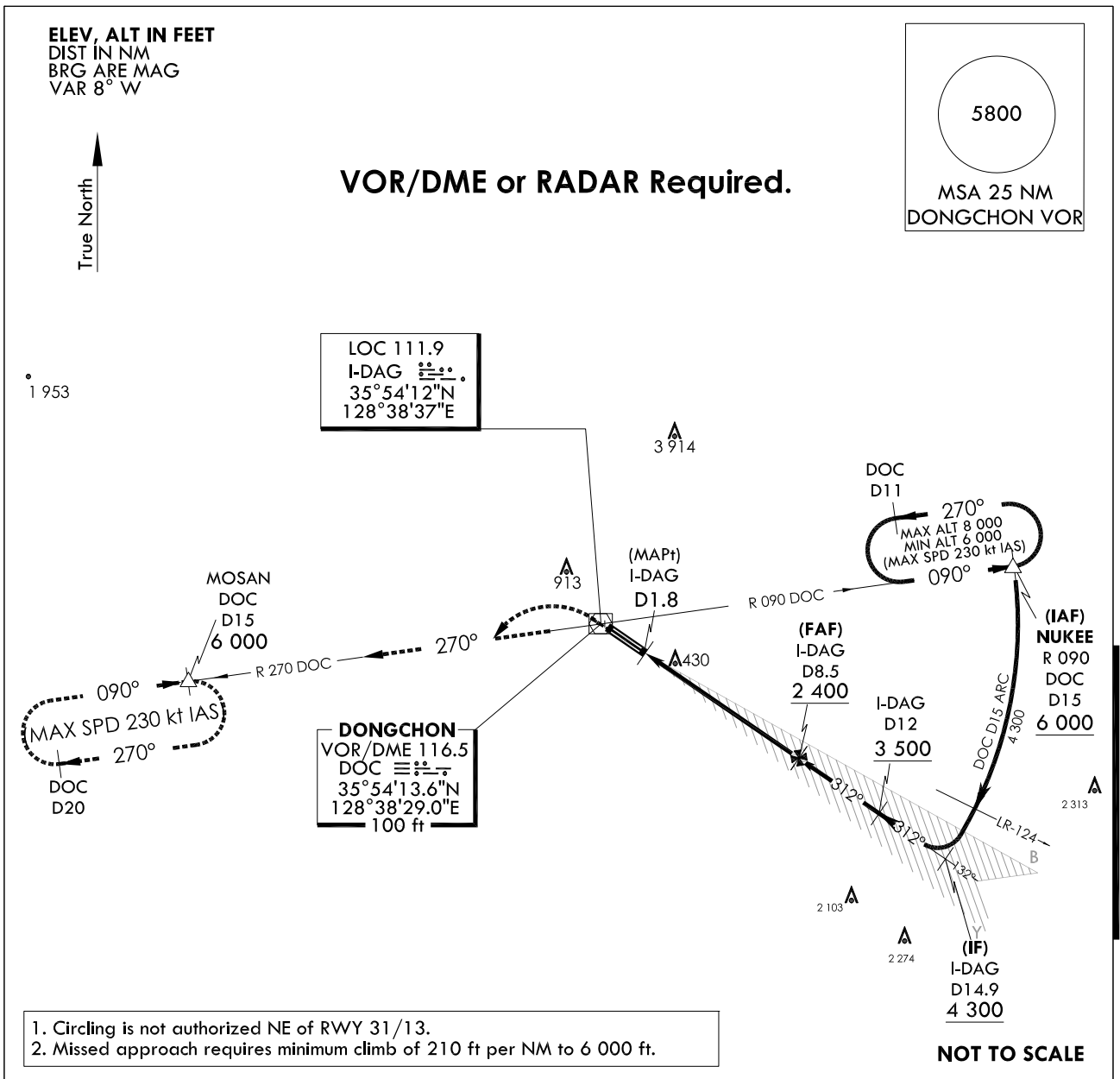
**INSTRUMENT
APPROACH
CHART**

AERODROME ELEV 120 ft
HEIGHTS RELATED TO
THR RWY 31R - ELEV 120 ft
HIGHEST ELEV TDZ 120 ft

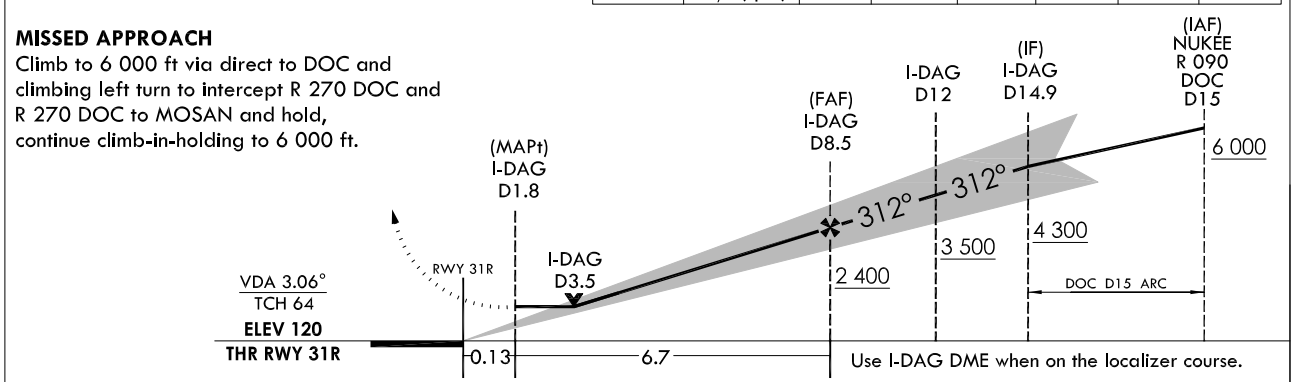
DAEGU APP 135.9 346.3
DAEGU TWR 126.2 236.6
365.0

DAEGU/Daegu Intl(RKTN)
LOC/DME
RWY 31R

Note : Approach and circle to land under U.S. TERPS.



RWY	Knots	60	120	180	240	300	TO
31R	V/V(fpm)	210	420	630	830	1 040	6 000



CATEGORY		A	B	C	D
S-LOC 31R	FULL	780/40	660(700 - 3/4)	780-1 3/8	660(700 - 1 3/8)
	ALS inop	780/55	660(700 - 1)	780-1 7/8	660(700 - 1 7/8)
CIRCLING		780 - 1	960 - 1 1/4	980 - 2 1/2	1 300-3
		660(700 - 1)	840(900 - 1 1/4)	860(900 - 2 1/2)	1 180(1200-3)

Change : Amended ILS plan view symbol.

INTENTIONALLY

LEFT

BLANK

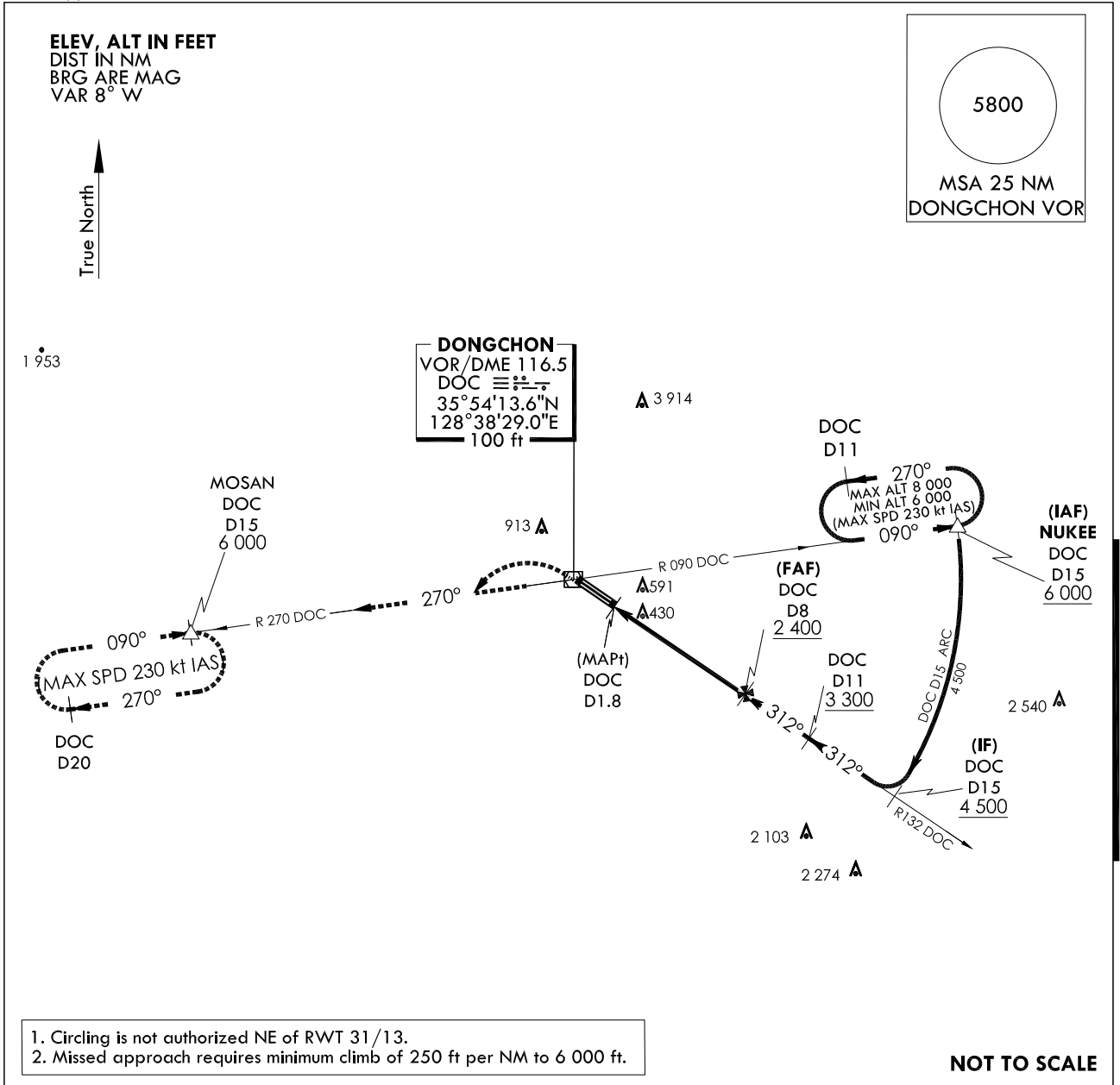
**INSTRUMENT
APPROACH
CHART**

AERODROME ELEV 120 ft
HEIGHTS RELATED TO
THR RWY 31R - ELEV 120 ft
HIGHEST ELEV TDZ 120 ft

DAEGU APP 135.9 346.3
DAEGU TWR 126.2 236.6
365.0

**DAEGU/Daegu Intl(RKTN)
VOR/DME
RWY 31R**

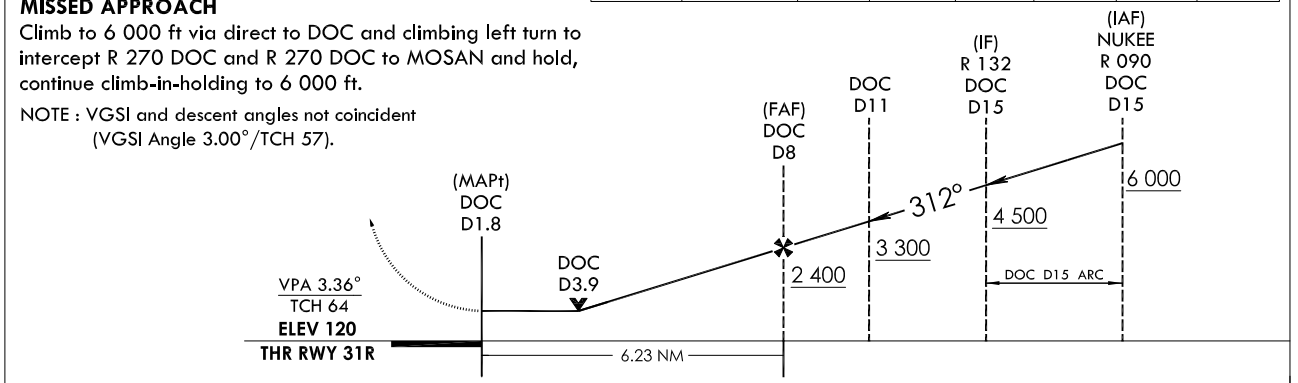
Note : Approach and circle to land under U.S. TERPS.



1. Circling is not authorized NE of RWT 31/13.
2. Missed approach requires minimum climb of 250 ft per NM to 6 000 ft.

NOT TO SCALE

6 000	DOC	R 270 DOC	MOSAN 6 000	TRANSITION ALT 14 000 TRANSITION LVL FL 140					
				MISSED APPROACH CLIMB RATE TABLE					
RWY	Knots	60	120	180	240	300	TO		
31R	V/V(fpm)	250	470	700	930	1 160	6 000		



CATEGORY		A	B	C	D
S-VOR 31R	FULL	880/40 760(800 - 3/4)		880-1 3/4 760(800-1 3/4)	
	ALS inop	880/55 760(800 - 1)		880-2 760(800-2)	
CIRCLING		880 - 1 760(800 - 1)	960 - 1 1/4 840(900 - 1 1/4)	980 - 2 1/2 860(900 - 2 1/2)	1 300-3 1 180(1 200-3)

INTENTIONALLY

LEFT

BLANK